



Use this template as a guide to planning and preparing your award board entry

---

**Use the examples on the next page as a guide on different options in styling your content layout.**

Remember: DO NOT INCLUDE ANY UNIQUE IDENTIFIERS ON YOUR BOARD – FOR EXAMPLE

1. No names of individuals
2. No company names
3. No regional identifying information.

Next Steps:

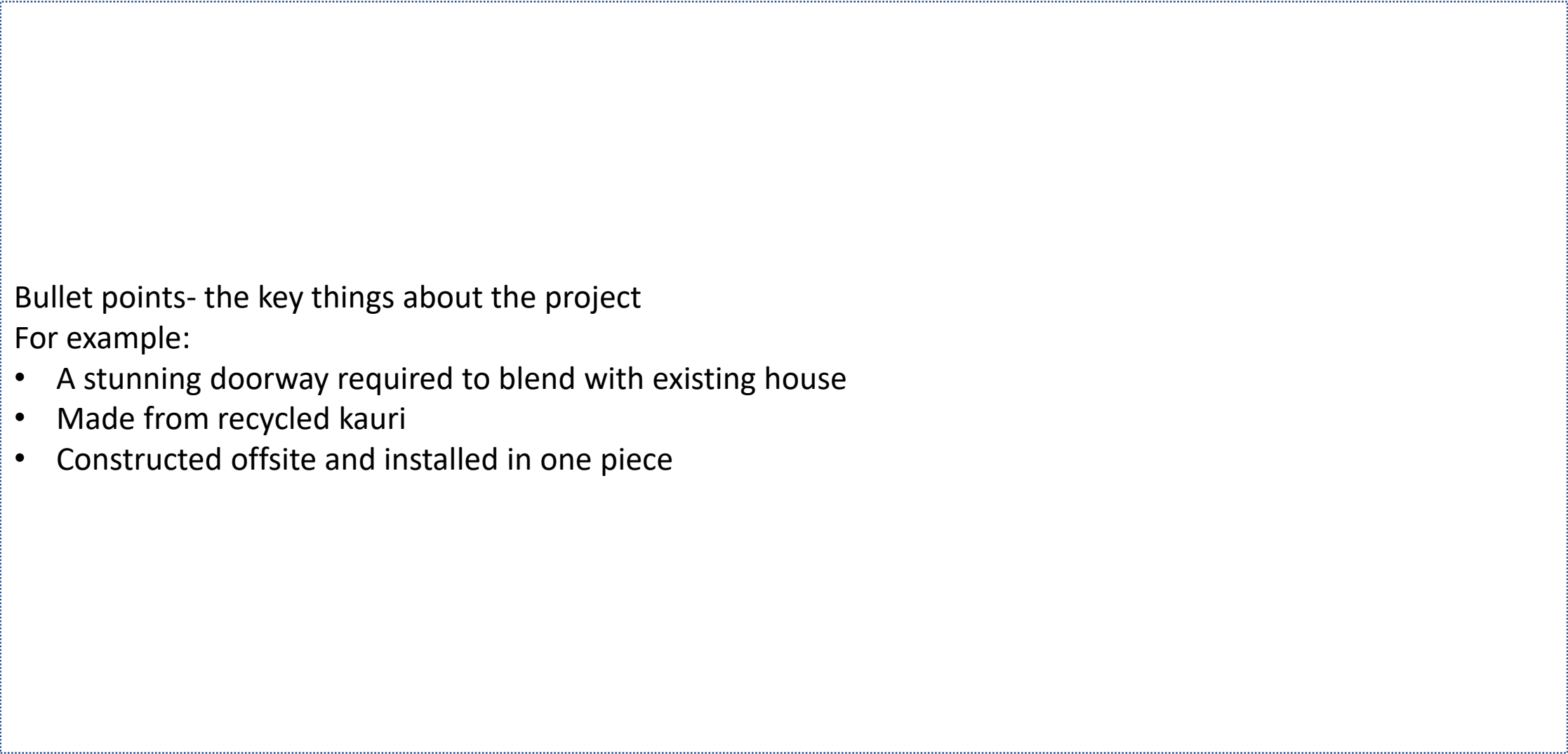
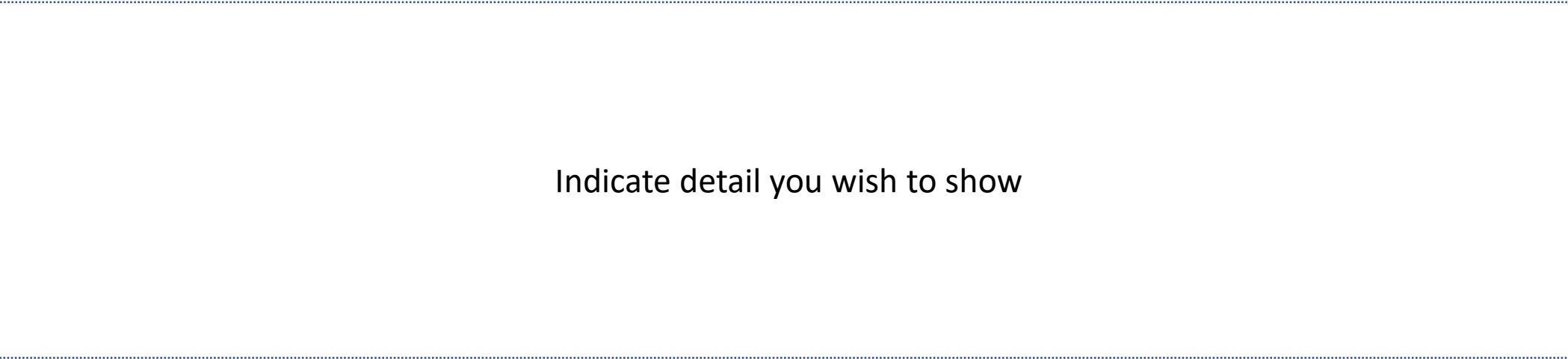
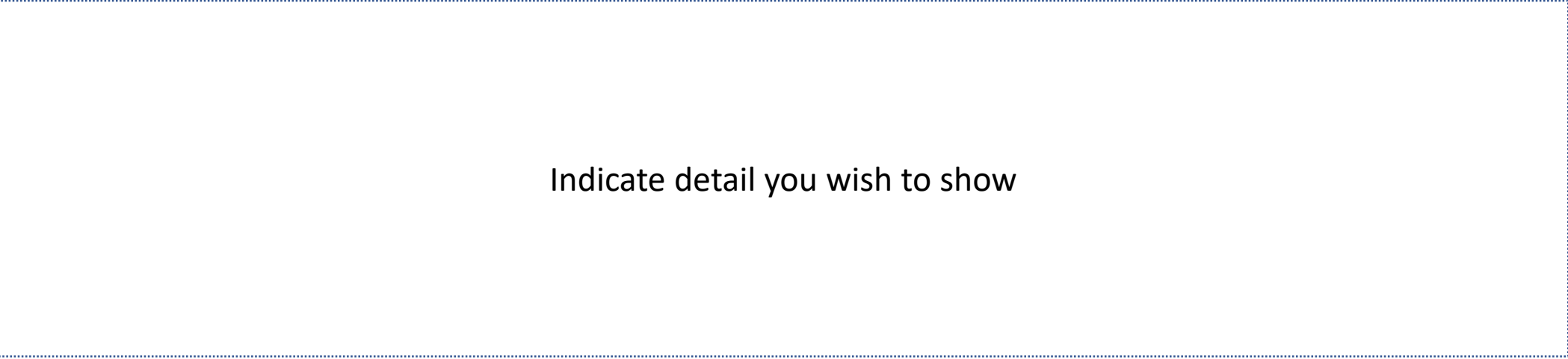
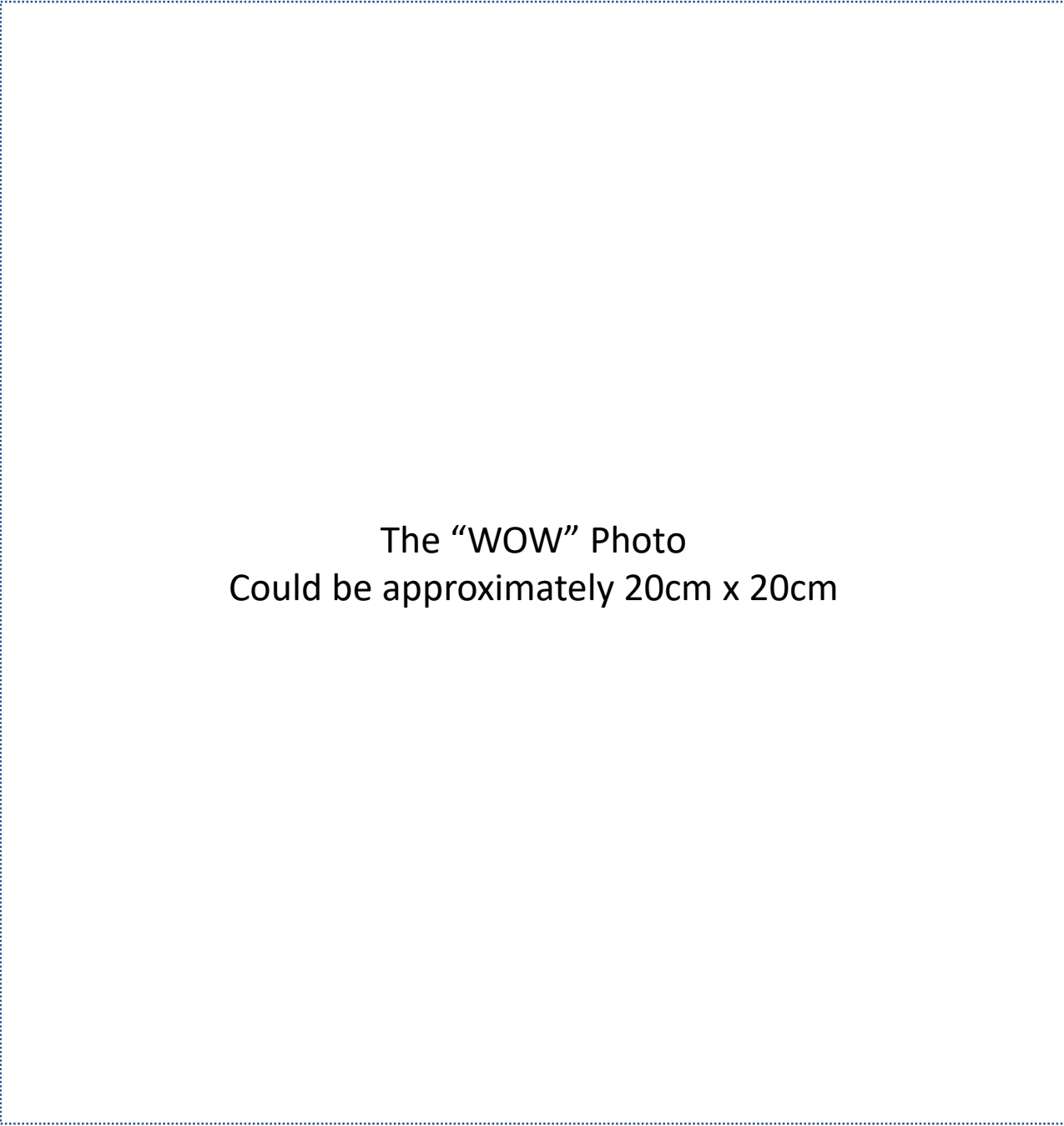
1. Submit your PDF award board via the online entry portal or email [awards@masterjoiners.co.nz](mailto:awards@masterjoiners.co.nz)
2. You may submit your photos as a separate file when entering your award.
3. Ensure your entry has NZ Master Joiner Awards or NZ Master Joiner Apprentice Awards 20XX as the heading and
4. show the categories it is entered into.
5. Board are to be A2 size (approx. 420 x 600mm) in horizontal format.
6. Check the board dimensions are correct.
7. All dotted and dashed areas are suggestions only.
8. All kitchen entries may have a different layout to accommodate the drawings and details

Leave this space clear for awards administration use.

Add your title header here

Category One:

Category Two:







Brief was to combine a design and build around the heritage of the brand established in 1918. Renovation of their existing 900square metre store. Fit out completed while the store remained trading, so no loss of turnover for the business. Aged American White Oak panels and timber mouldings, adding the contemporary feel by flipping the heritage oak front of house to the formal lacquered black and white detailed mouldings in the dressing room areas. A reception area at front with the flipside creating a scene of a formal suit lounge, which continues the heritage of the brand. Other products are lacquer finishes, signage, aged brass signs, Stefano Orati lighting, MDF special effect painted to appear like brick end panels and columns. Manufactured in Nelson and delivered with in house installation team to Christchurch. Period of installation 3 weeks.

## Master Joinery Awards 2018

CATEGORY: BEST KITCHEN, BEST DESIGN, BEST KITCHEN UNDER \$15,000



Before Photos

### Client Brief

Our client had downsized to a townhouse and was looking for a kitchen and dining room renovation that included all the features they'd enjoyed from their previous kitchens in larger properties, whilst working on a much smaller footprint and budget. They were looking to maximise storage and bench space in a kitchen that was functional and light.

### Project Description

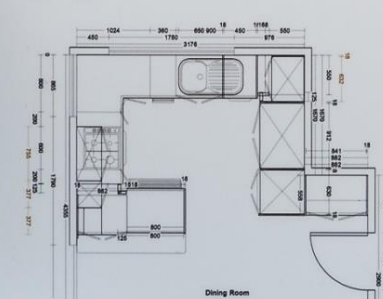
The client's Scandinavian heritage is reflected throughout the house and we continued this influence in the kitchen and dining room cabinetry. The handle-less cabinetry, a mixture of 'pull to open' doors and drawers and Blum Tip-ons, together with warm white cabinetry and subtle oak laminate features, all embody the Scandinavian principles of clean lines, warm tones, functionality and craftsmanship. This, together with use of regular and smaller sized appliances, gives the space visual balance.

Cabinetry is constructed from Melmac Warm White with Beechwood Oak Wilderness on the wall cabinetry. Negative detail is utilised under the bench-top, around the tall/wall cabinetry and floating shelves.

All this, together with a Laminex Pure Mineralsone Natural finish 37mm bench top with Euro edging, created the look we wanted without the price tag.

The layout encompasses an almost equidistant work triangle giving the space functionality and ease of use. The client wanted a deeper bench top on the peninsula and we created this without compromising on the available space between the bench tops by running the peninsula bench top past the ranch sliders slightly. A small cut out was then made in the bench top to allow the curtains to be pulled back as far as possible, thus letting in the maximum amount of natural light. Blum Silk White Anvaro drawer runners were used throughout the kitchen, along with non-slip matting.

With clever design we maximized the usable space by incorporating a spice rack in front of the integrated extractor, a drawer under the oven, a bottle drawer and an internal drawer for utensils close at hand to the stove. We included three Blum internal pantry drawers in the top pantry to maximize storage, keeping the sink base unit as tight as possible. The end result was a kitchen that met all of our client's wishes.



## NZ Master Joiner Awards 2018

Category: Best Kitchen



### MATERIALS:

- Panels: 20mm Prime AWO Art Veneer with custom stain AWO T&G wall paneling with concealed fixings. AWO solid timber clashing - see Detail Drawing 12mm Stainless steel to underside of upper cabinets. Above Fridge: 35" Brushed aluminum Formica on black melamine with Scim aluminum T-Edge on flaps.
- Carcasses: 18mm Laminex Melamine, black with 2mm PVC edging.
- Bench top: 60mm Caesarstone, Pure White by Artisan Stone.
- Handles: Laser cut 3mm plate steel handle with iron paste coating recessed into the back of the veneer.
- Hardware: Blum Logabox, Terra black. Blum Anvaro line drawer inserts. Blum Aventos HK, tip on.
- Sinks: Island - Heritage Brighton 740-10. Scullery - Heritage Robiq 500-10.
- Lighting: LED strip in scullery and bar. Range hood elevation - Hafele LED spot lights on remote control.
- Toe Kicks: Plate steel, cut to shape and laminated to toe kicks.
- Bins: Vault Segel Waste Bins, top mounted.
- Appliances: Integrated Miele dishwashers. Zenith Hydro Top G4 chilled filtered water.

### CLIENT BRIEF:

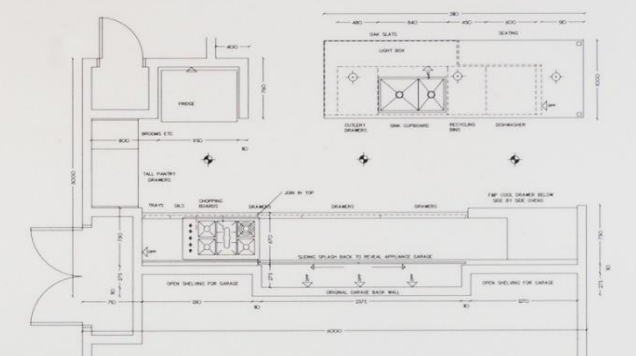
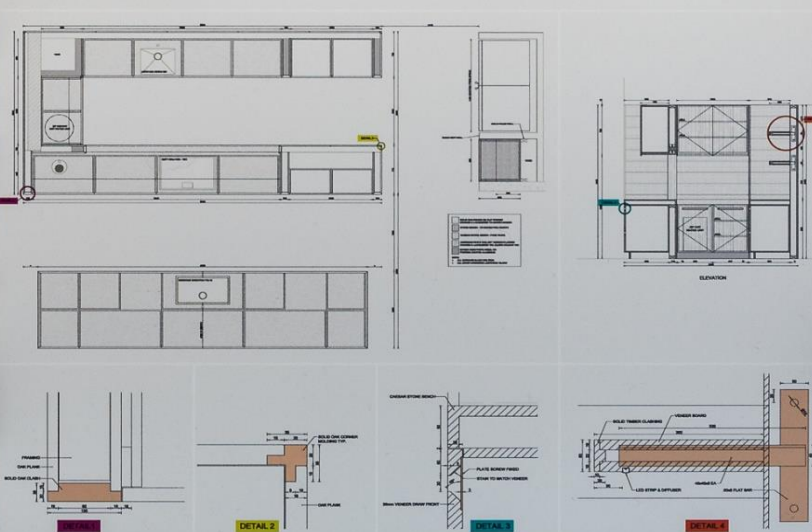
This house is a bold solid structure with real presence in the landscape. The client wanted all of the joinery to reflect this and to be consistent throughout the house: thick benchtops and shelves, solid timber clashing, visible presence of steel, stainless steel and stone. The solid timber T&G wall paneling is a key feature and is used elsewhere in the house with surrounding joinery. Quality and style remained paramount throughout the project, the client never let up on the drive for a beautifully unique and quality home. They felt it was important to remain connected to the kitchen when in the scullery, so the opening was created. Again, solid bench tops work in well with the nearby fire hearth.

### CHALLENGES:

This was a very technically challenging kitchen, requiring exceptional craftsmanship across many staff and suppliers. 10mm scissor panels were specified throughout allowing only minimal clearances to the top and sides and driving the need for precision in measurement and set out. This started with a significant straightening effort for all kitchen & scullery walls prior to laying a single T&G board. Straight, true and plumb was mandatory on all surfaces to ensure perfect fit. There are seamless integrations of materials throughout, junctions of solid timber, veneer, steel and stainless steel are all through the kitchen. Due to the size of the island (42x12) and scullery, it took 10 slabs/batches of Caesarstone to be thoroughly checked before the 'Pure White' could be achieved without any stone defects / marks.

### KEY FEATURES:

- Integration of wall paneling and veneer cabinetry.
- Unique recessed handle detail.
- Mitred corners around the island.
- Use of solid oak clashing to improve durability at walls, corners and shelves.
- Thick solid bench tops with an oversized island.
- Open scullery.
- Quality and craftsmanship paramount.



## NZ Master Joiner Awards 2018

### Categories

- Best Use of Imported Timber
- Best Kitchen
- Best Kitchen Design
- Best Use of Creative Lighting
- Best Regional Award

### The Oak and Marble Kitchen

The architect's plan showed the generic scullery and island design. The clients were confused as to how they were going to use the scullery given they had just spent a small fortune for an elevated section with impressive view. They of course wanted to appreciate these views and not be stuck in a windowless box.

The clients were the two extremes in heights with the primary user very short. The backbench was dropped to 830mm as she was a passionate baker and this gives her the perfect height. All the small appliances and baking goods were concealed behind 2 large sliding splash backs. He was the entertainer so a coldrawer and an abundance of higher cupboards for his specialty needs sorted him out.

I wanted to enhance the length of this kitchen so I designed a back wall of horizontal oak slats with a negative detail between each. Long over cupboards and drawers accentuated this length. I concealed the fridge behind a return nib wall, still very accessible but completely out of the main view.

The oak slats continued onto the island that was 950 high to allow him to wash the dishes without backache. Behind the oak slats I put a vinyl print of a veined marble. This was back lit and seen through the negative detail. The sliding doors also had the marble vinyl behind glass.

### Specifications

- Main Kitchen:** Laminex Caesarstone Raw Concrete (Pacific Stone)
- Kitchen Backs:** Laminex Purecoat M88 mirror gloss
- Doors/Drawers etc:** Solid American white Oak timber slats
- Handles:** Gold and Heritage Hardware
- Splash back:** Hensch sliding doors with Marble print to glass from RT4001
- Sink:** Blum Servo-Driven
- Faucet:** Blum Logabox servo driven, Blum Clip top.
- Rubbish bin:** Blum Servo-Driven
- Hardware:** Blum Aventos HK, tip on.
- Ovens:** Electrolux
- Rangehood:** Blum Logabox
- Fridge:** Electrolux
- Hob:** Electrolux
- Dishwasher:** Bosch
- Bar fridge:** F&P cool drawer